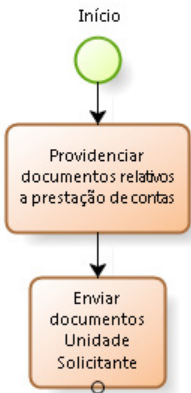


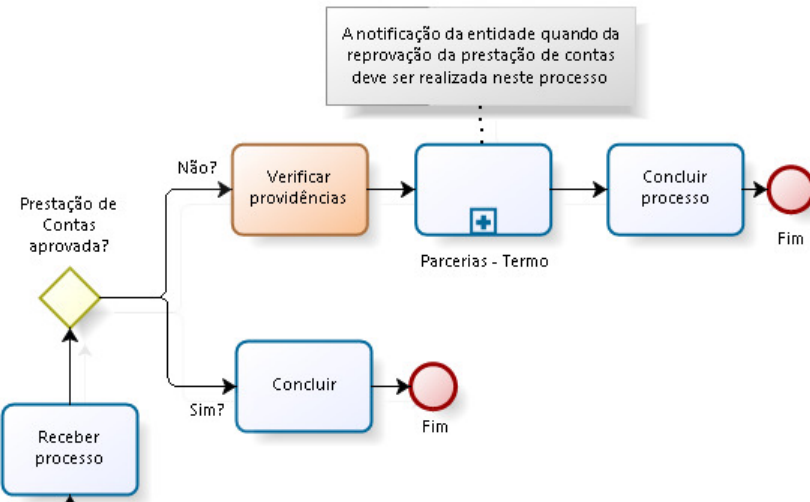
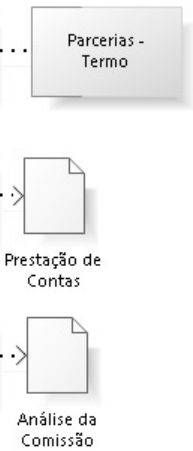
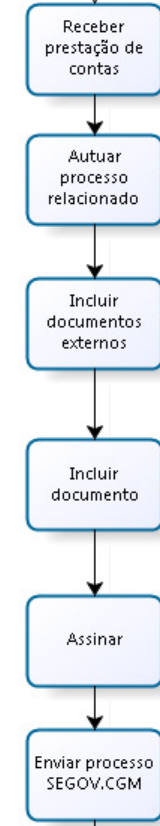
Entidade Parceira



Anexo VIII
Fluxo do Processo
Parcerias - Prestação de Contas
A ser observado pela Administração Direta e Indireta

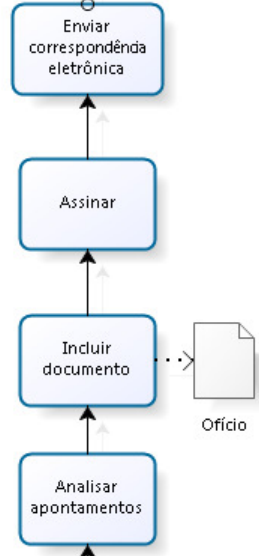
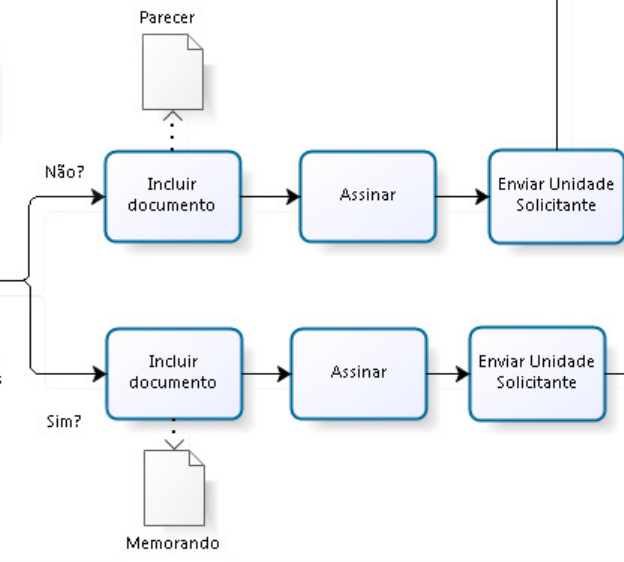


Unidade Interventente



A notificação da entidade quando da reprovação da prestação de contas deve ser realizada neste processo

Prefeitura Municipal de Joinville



SEGOV.CGM

