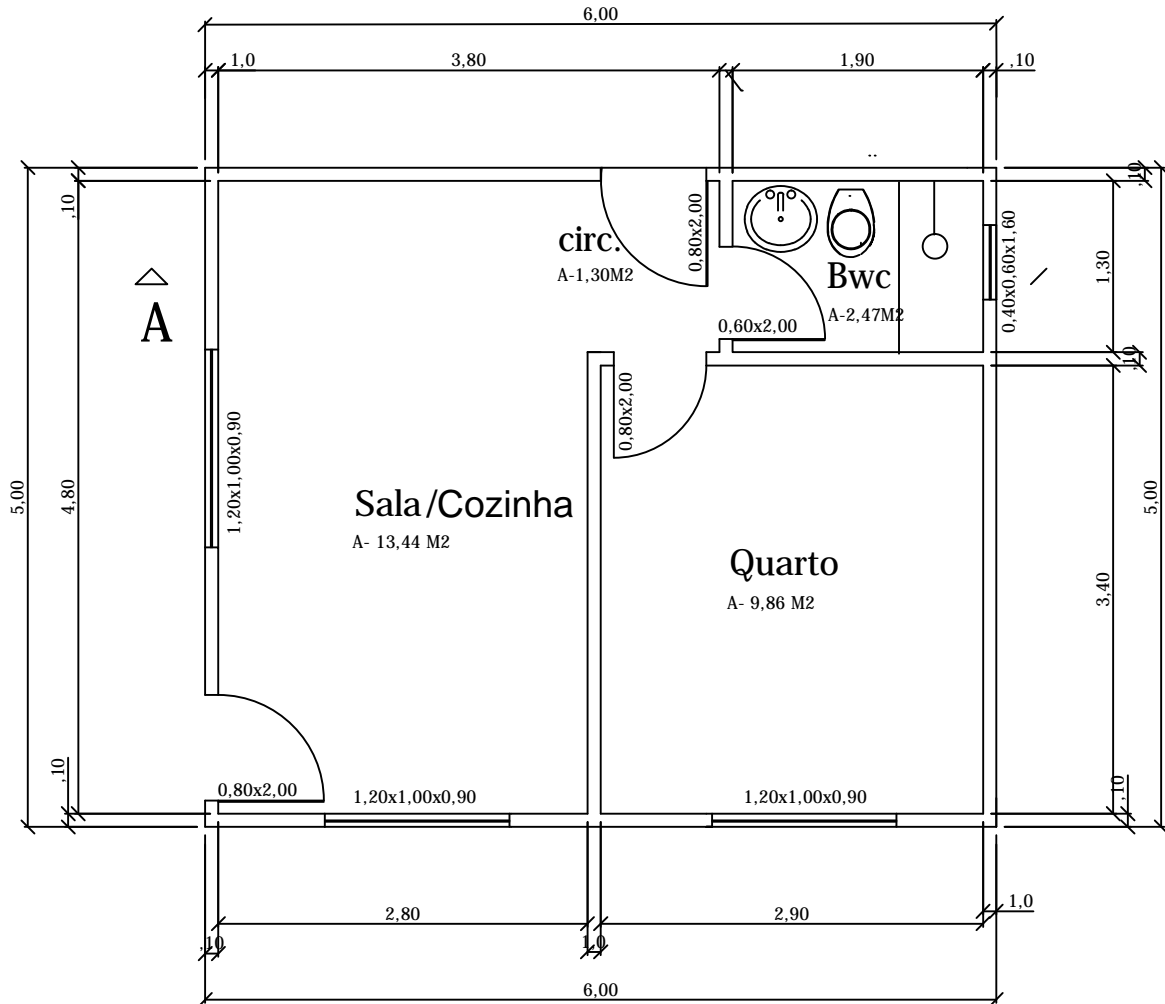


30 m<sup>2</sup> 1 quarto

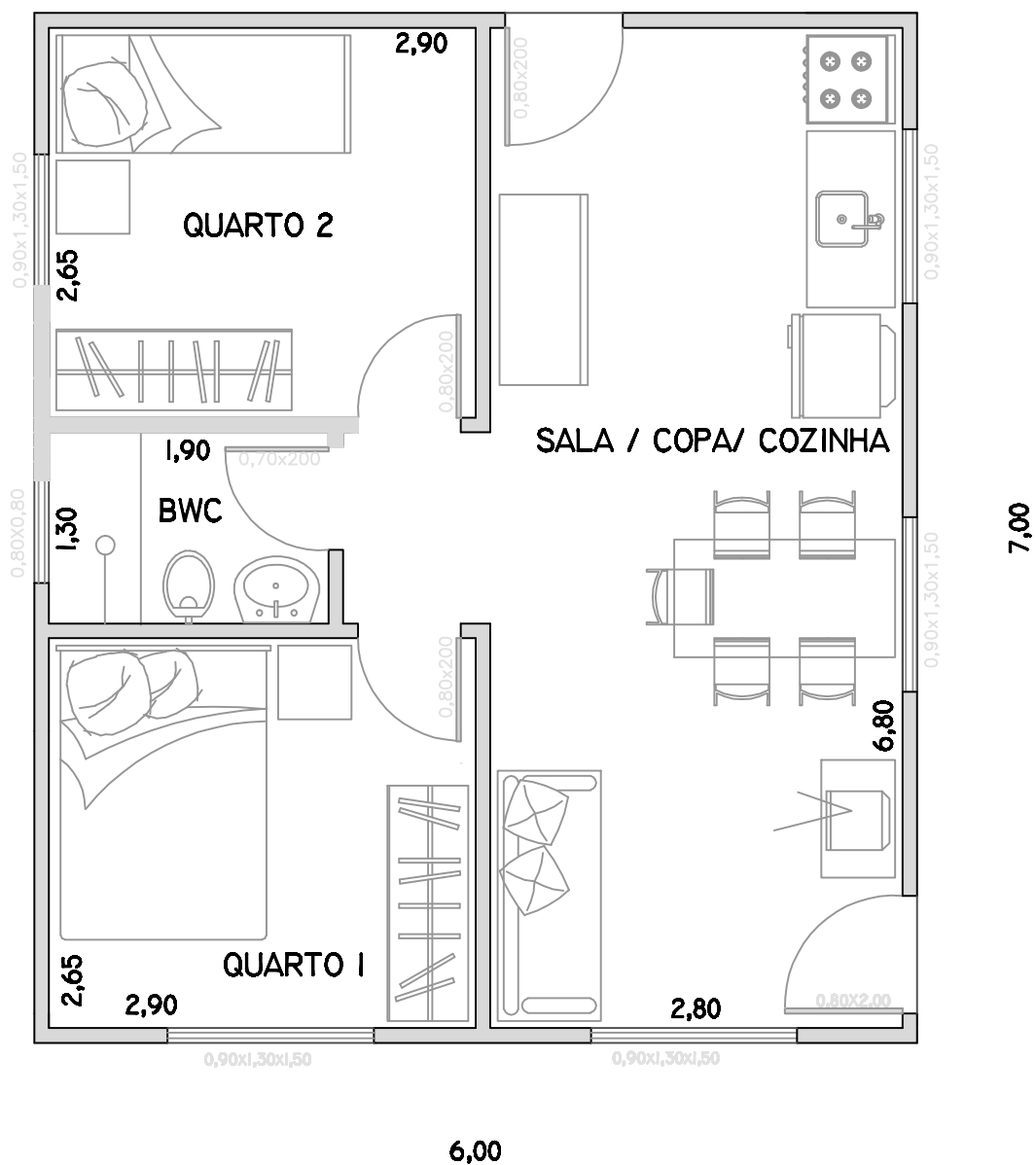


## PLANTA BAIXA

Escala 1:50

# d

42,00 m<sup>2</sup> 2 quartos escala 1:50



|                              |  |
|------------------------------|--|
| QUARTO I 7,68 m <sup>2</sup> | SALA/ COPA/ COZINHA 19,04 m <sup>2</sup> |
| QUARTO 2 7,68 m <sup>2</sup> | BWC 2,47 m <sup>2</sup>                  |